

NEW ZEALAND INSTALLATION INSTRUCTIONS

With 2-piece internal corner profile or standard internal corner profile.
Wallpanel with Aqualock



In the wet zone, all profiles, cut surfaces, joints and drip noses, **MUST** be cleaned and have sealant applied. Fibo-Wipes is only to be used on laminate surfaces.

Fibo Seal is recommended as a sealant.



The panels can be mounted on existing walls or on a levelled timber frame with a centre to centre distance of 600 mm and horizontal battens at 800 mm centres. **NB!** When attaching heavy items such as washbasins, there must be additional studding. **NB!** Acclimatisation – the panels **MUST** be stored flat at room temperature for 3 days prior to being used (longer if they have been kept in cold storage.)



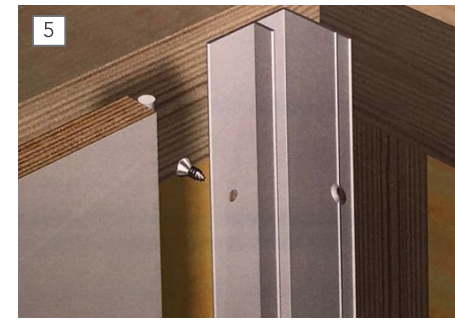
Where there is a requirement/need for a solid wall behind the panel, a minimum 12-15mm x 18mm plywood or rough panels should be used. Using a solid wall is an ideal solution for the installation of our 300mm effect panels.



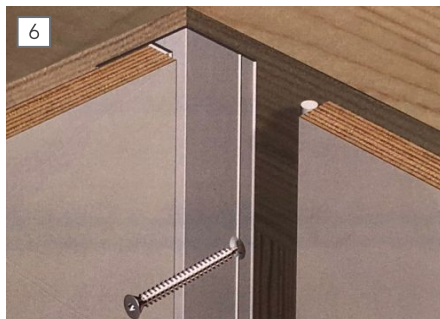
The panels are fastened plumb at the top. Allow at least 5mm distance up to the ceiling. The inner corner profile is attached to the stud using screws through the pre-drilled holes. Remember to countersink the screws.



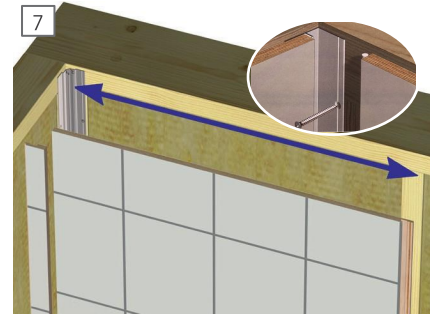
Start the installation as shown in the drawing. Adjust the length of the panels to meet the ceiling. Set the internal corner profile onto the panel, then fit both panel and corner profile place, into the corner. **NB: The panels replace water vapour resistant foil on outer walls.**



Start the installation above the door. Profile comes predrilled. Corner profile fixed into the back of the panel with a special screws as shown (included in the package of profile). In the shower area all edges lubricated with Fibo Seal or other MS Polymer sealant.



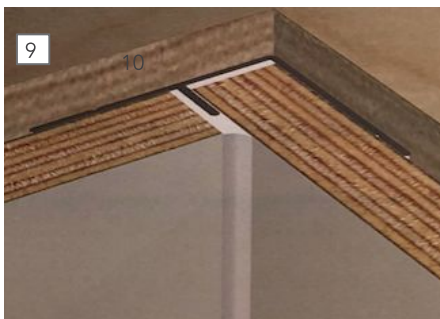
The inner corner profile fixed to the upright in pre-finished countersunk holes. Fit the next panel in width and height, apply sealant on the edges and slide the panel into the corner.



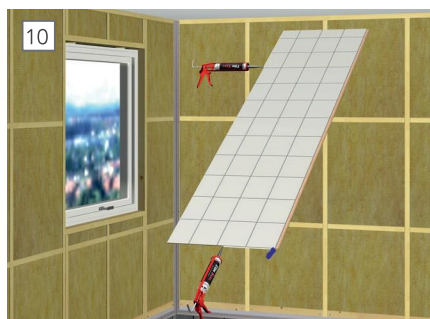
Measure the top and bottom of the first panel, (remember to measure into the profile and to the first studs). Cut the panel and test fit without sealant. **NB: The panel MUST be plumb/level.** Clean cut surfaces, joint edge and under drip nose.



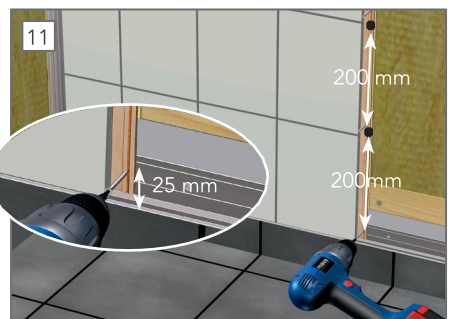
Apply sealant (MS Polymer) in the corner (preferably using masking tape for the best possible result). Clean with Fibo clean, Fibo fug and Fibo Wipes or alternative cleaners.



Finished



Apply approved sealant on the cut surfaces as shown in the drawing.



The panel is screwed to the stud as shown in the drawing.

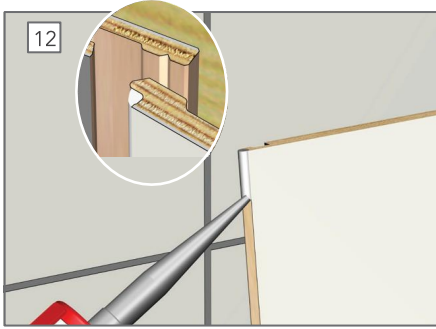


Beyond Tiles Ltd, 165 The Strand, Parnell, Auckland

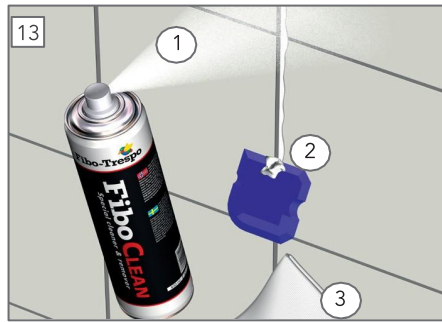
www.beyondtiles.co.nz | info@beyondtiles.co.nz

NEW ZEALAND INSTALLATION INSTRUCTIONS

With 2-piece internal corner profile or standard internal corner profile.
Wallpanel with Aqualock



Clean the joint edge and apply sealant on the joint edge and cut surface, prior to clicking it into place.

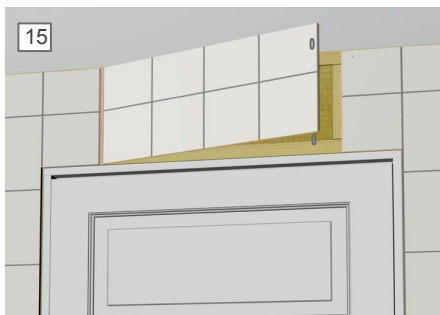


NB There should be so much sealant in the joint that the sealant oozes out along the length of the entire joint:

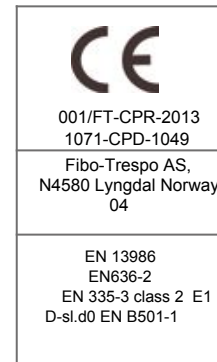
1. Spray Fibo clean on the excess sealant
2. Remove the Fibo Fug
3. Wipe away any visible sealant residue with Fibo Wipes



For pipe penetrations, drill out a hole 5 mm larger in diameter than the pipe. Cut surfaces must be cleaned. Use approved pipe penetrations such as Uponor M6 or Sanipex.



The final panel is folded at one side so that the joint will be neat and is fastened with staples, concealed by ceiling cornices and door architraves.



ACCESSORIES



As the panels may have sharp edges, the use of gloves during assembly is recommended.

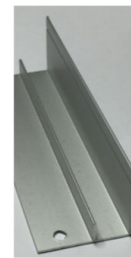
As a filler/sealant we recommend Fibo seal.

Fibo seal is approved by the norwegian building research institute (nbi) and in accordance with etag 022

TOOLS



base profile



internal corner profile



external corner profile



Beyond Tiles Ltd, 165 The Strand, Parnell, Auckland

www.beyondtiles.co.nz | info@beyondtiles.co.nz